

Newsletter 2008-5

DS-6 PC- Call Station for innovative workplaces

A new ms Neumann product for the individual workplace design in industrial communication technology. This digital console is an addition to the DS-6 system and allows all functions according to the MTSD DS-6 module.

Advantage:

Selective distribution functions for several operational areas by using different screens.

Figure 1:
Example desktop touch monitor

Figure 2:
Example built-in touch screen

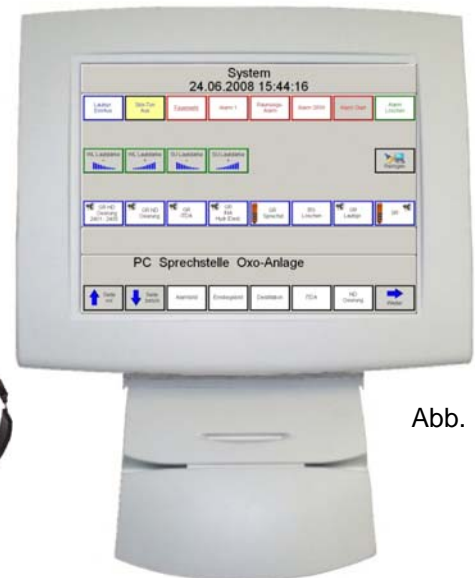


Abb. 1

Features:

- Distributed intelligence
- Ethernet interface for connection to the DS-6
- Desktop touch monitor or
- Built-in touch screen
- Functions to operate with mouse
- Voice communications using Headset
- Optimal connection and signalling speed
- PC with sound card for voice playback
- Communication with high-syllable intelligibility
- Individual, customized configuration of the user interface
- Embedding of icons in the user interface
- Selective sharing of the user interface with max. 40 target keys per page

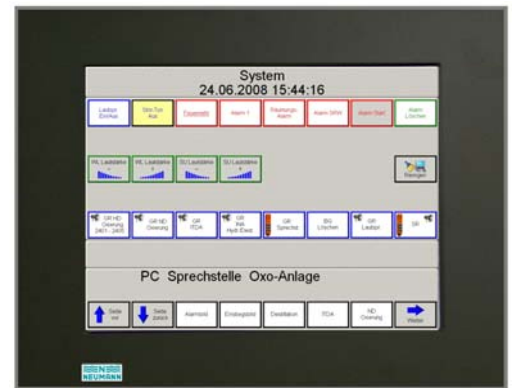


Abb. 2

Our weatherproof Ex-Call Station in overview

The explosion-proof, Weatherproof Digital WFD Call Stations provide direct intercom connections to other call stations and PA loudspeaker announcements in potentially explosive environments. When the robust two-way toggle keys are pressed, they activate contact less opto-couplers, which make them suitable for permanent use in aggressive, moist and dusty environments, especially in areas that are enriched with explosive gases and dust. The call stations are designed for wall mounting, and they cannot be expanded with expansion enclosures.

Weatherproof Digital Call Station, Ex-Proof (WFD-EX)



**WFD-EX Call Station,
1 two-way toggles**
Art. No. 1 564 6

**WFD-EX Call Station,
2 two-way toggles**
Art. No. 1 565 7

**WFD-EX Call Station,
3 two-way toggles**
Art. No. 1 563 5

**as above, but with
auxiliary amplifier¹⁾**
Art. No. 1 561 3

**as above, but with
auxiliary amplifier¹⁾**
Art. No. 1 562 4

**as above, but with
auxiliary amplifier¹⁾**
Art. No. 1 560 2

Equipment Features

- dust- and watertight, fiberglass-reinforced polyester enclosure
- two-way toggle keys with opto-coupler, 2 lines each
- active components pressure-proof enclosed
- integrated pressure chamber loudspeaker and electret microphone
- connector for Auxiliary Amplifier

Functional Features

- direct intercom connections, key-controlled
- can be switched to low volume (nighttime operation)
- LED indication of incoming call and line busy, prioritized
- functions configurable
- Uk0 interface
- few wires
- prioritisation configurable

Art. No.	1 594 6 / 1 561 3	1 565 7 / 1562 4	1 563 5 / 1 560 2
Physical Data			
Number of two-way toggle keys	1	2	3
Weight (without auxiliary amplifier)	approx. 6.5 kg		
Enclosure dimensions (H x W x D)	500 x 120 x 180 mm		
Enclosure colour	pure orange (RAL 2004)		
Electrical Data			
Supply voltage range	48-60 V DC		
Max. quiescent current	≤25 mA		
Max. operating current	≤100 mA		
Amplifier power rating	1 W		
Min. input voltage for rated power	150 mV		
Frequency range	300 Hz to 7 kHz		
Communication protocol	Neumann WL Protocol		
Environmental Conditions			
Climate class per DIN EN 60721-3-3	3K6 (however, changed temperature range -20° to +70° C)		
Protection class per DIN EN 60529 / IEC 529	IP66		
Ex-proof certification per EG-RL 94/9/EG	II 2 G EEx d e ib IIC T4 (PTB 01 ATEX 2070) II 2 D IP66 T135°C (PTB EX 05-25008)		

¹⁾ The 25-W Auxiliary Amplifier (Art. No. 1 570 3) is installed.

Weatherproof Analogue Call Station, Ex-Proof (WFA-EX)



**WFA-EX Call Station,
1 two-way toggle**
Art. No. 1 575 8

**as above, but with
auxiliary amplifier¹⁾**
Art. No. 1 578 1



**WFA-EX Call Station,
2 two-way toggles**
Art. No. 1 576 9

**as above, but with
auxiliary amplifier¹⁾**
Art. No. 1 579 2



**WFA-EX Call Station,
3 two-way toggles**
Art. No. 1 577 0



**as above, but with
auxiliary amplifier¹⁾**
Art. No. 1 580 4

Equipment Features

- dust- and watertight, fiberglass-reinforced polyester enclosure
- two-way toggle keys with opto-coupler, 2 lines each
- active components pressure-proof enclosed
- integrated pressure chamber loudspeaker and electret microphone
- connector for Auxiliary Amplifier

Functional Features

- key-controlled line selection
- line functions configurable from control centre
- can be switched to low volume (nighttime operation)
- LED indication of incoming call and line busy
- prioritisation

Art. No.	1 575 8 / 1 578 1	1 576 9 / 1 579 2	1 577 0 / 1 580 4
Physical Data			
Number of two-way toggle keys	1	2	3
Weight (without auxiliary amplifier)	approx. 6.5 kg		
Enclosure dimensions (H x W x D)	500 x 120 x 180 mm		
Enclosure colour	pure orange (RAL 2004)		
Electrical Data			
Supply voltage range	48-60 V DC		
Max. quiescent current	10 mA		
Max. operating current	approx. 50 mA		
Amplifier power rating	1 W		
Min. input voltage for rated power	150 mV		
Frequency range	300 Hz to 10 kHz (-3 to ±1 dB)		
Environmental Conditions			
Climate class per DIN EN 60721-3-3	3K6 (altered temperature range -20° to +70° C)		
Protection class per DIN EN 60529 / IEC 529	IP66		
Ex-proof certification per EG-RL 94/9/EG	 II 2 G EEx d e ib IIC T4 (PTB 01 ATEX 2070)  II 2 D IP66 T135°C (PTB EX 05-25008)		

¹⁾ The 25-W Auxiliary Amplifier (Art. No. 1 570 3) is installed.

Father Information to our call station offer, do you find in our homepage under „Product Catalogue Call Station“!

Information about our new products

We conduct monthly information sessions.

Our next German-language information session is scheduled for Aug. 26, 2008

We are glad to welcome you in our offices for this event. A special invitation will be sent to you shortly.

We would also be pleased to conduct an information session in your company. If you're interested, please contact Mr. Ripholz under +49 (0)208 5995 294 or e-mail: bripholz@neumann-elektronik.com

Our topics:

- Orientation of our company
- Remote IP intercom system DS-6 for exchange speaking, sound and alarm by means of a demonstration plant with practical examples.
- TIMM communication system (Total Information Management) for large-scale applications in the IP area
- Added value of the IP system technology in standardized transmission networks.